



Part number
Numéro de pièce

J201SSG000

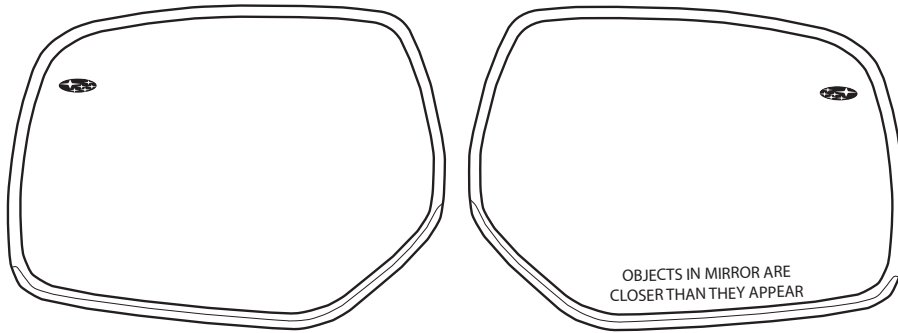
Installation instructions
Instructions d'installiion

Description: Exterior auto dimming mirror with approach lighting
Description: Rétroviseur extérieur à antiéblouissement automatique avec éclairage d'approche

Kit contents

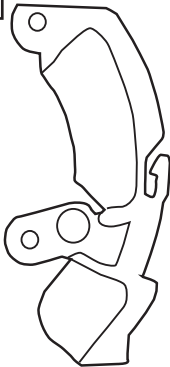
Contenu de la trousse

A



Auto dimming mirror
Tetroviseur antiéblouissement

B



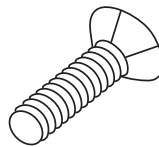
Drive Side
Friction Damper
Côté conducteur
Amortisseur à friction

C



Passenger Side
Friction Damper
Côté passager
Amortisseur à friction

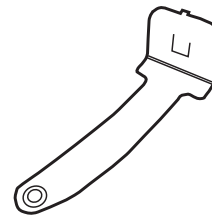
D



Screw
Vis

4X

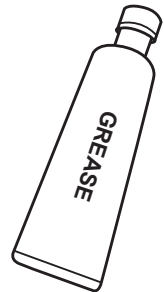
E



Friction Damper Spring
Ressort amortisseur à friction

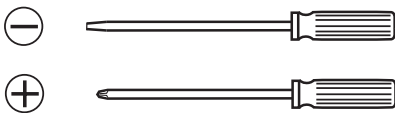
4X

F

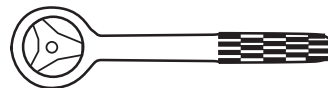


Grease Pack
Nécessaire de lubrification

Tools required
Outils requis



10 mm



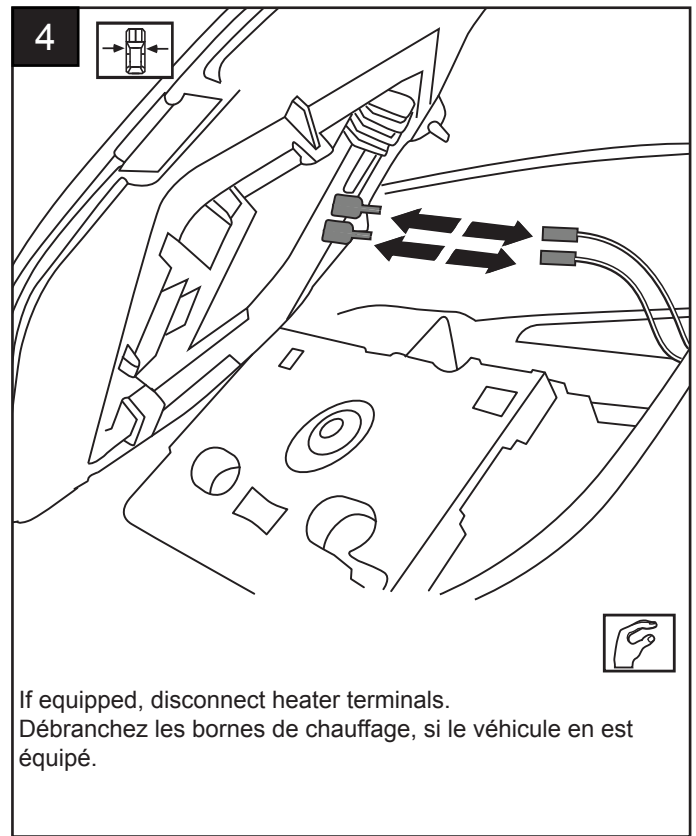
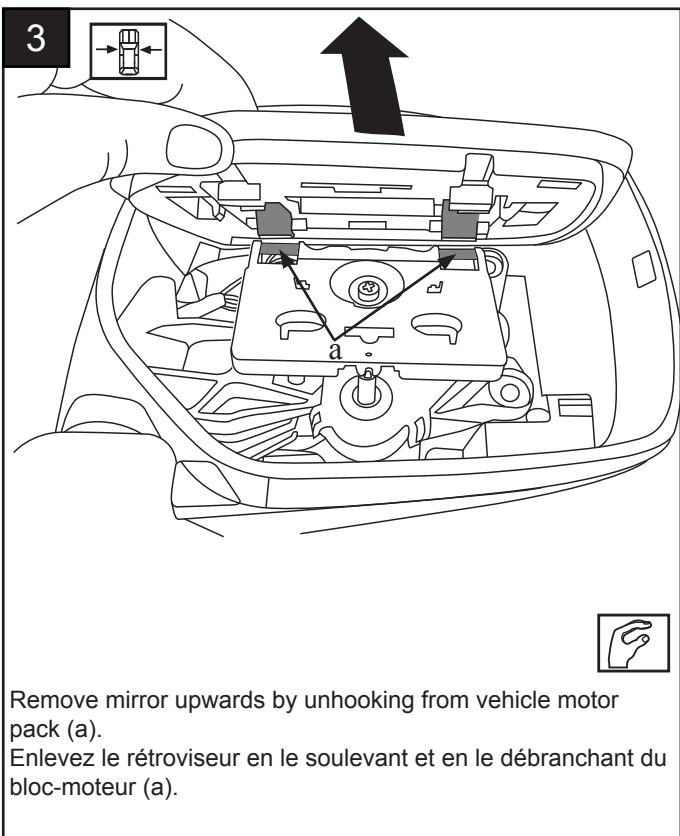
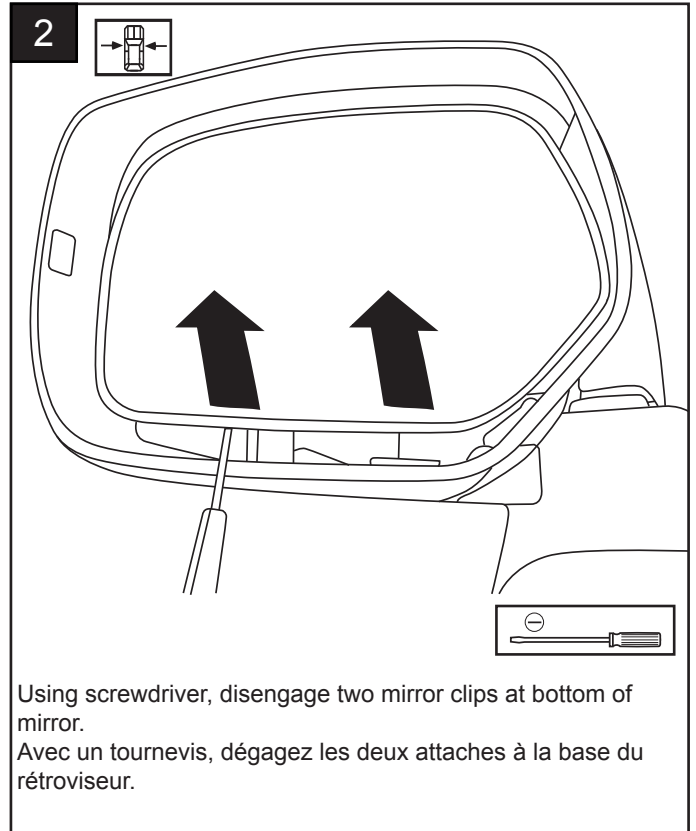
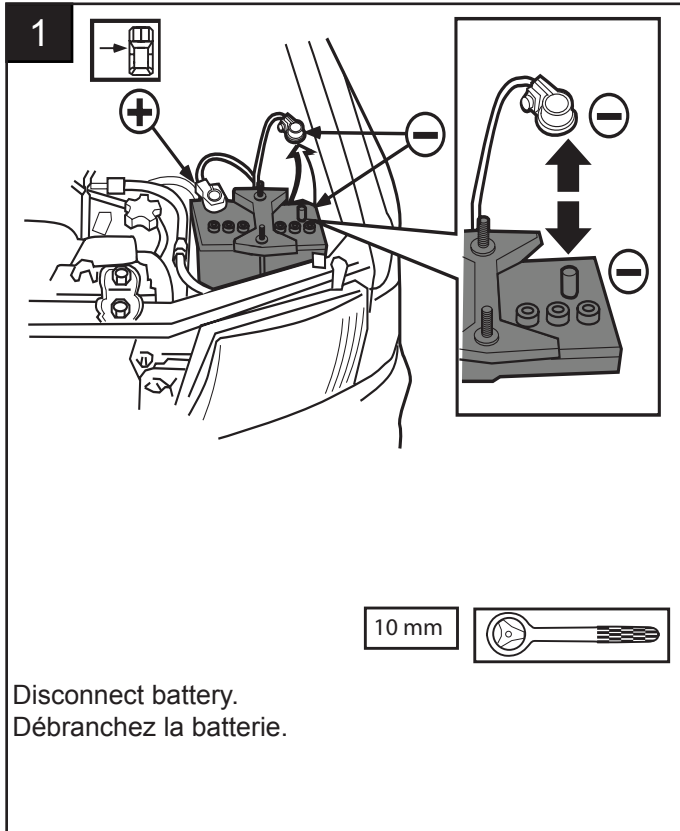
PART NUMBERS
J201SSG000

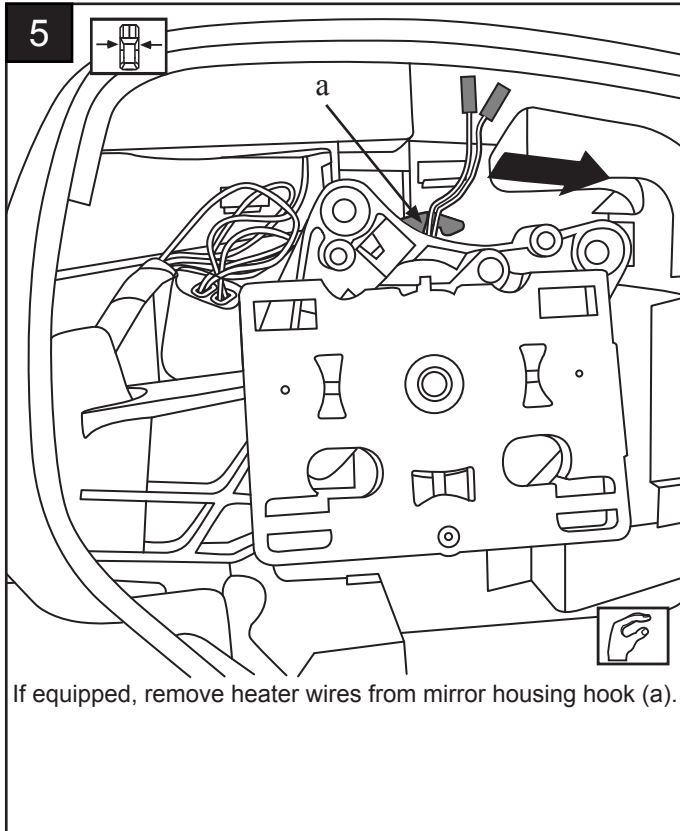
ISSUE
A

DATE
02/08/13

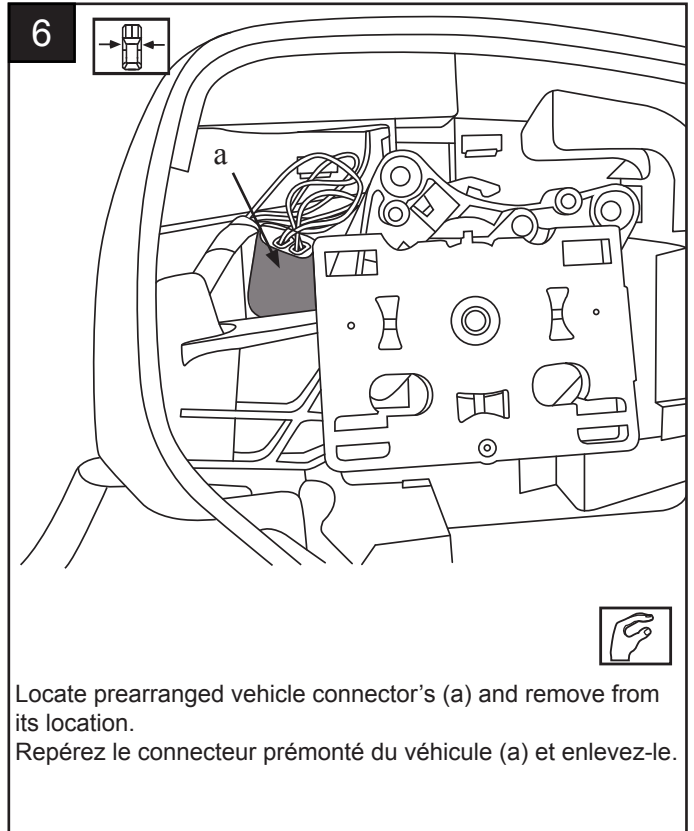
SUBARU OF AMERICA

PAGE
1/7

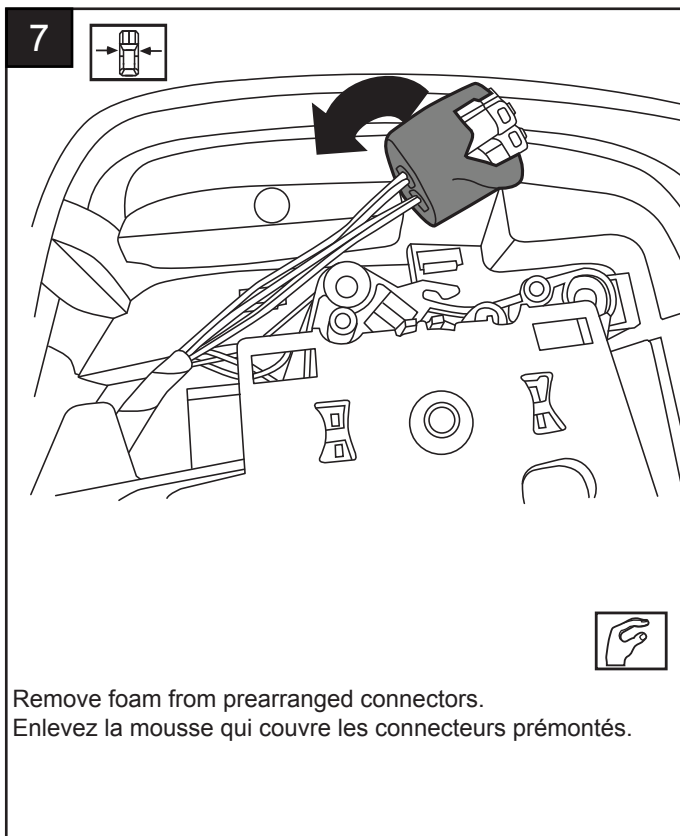




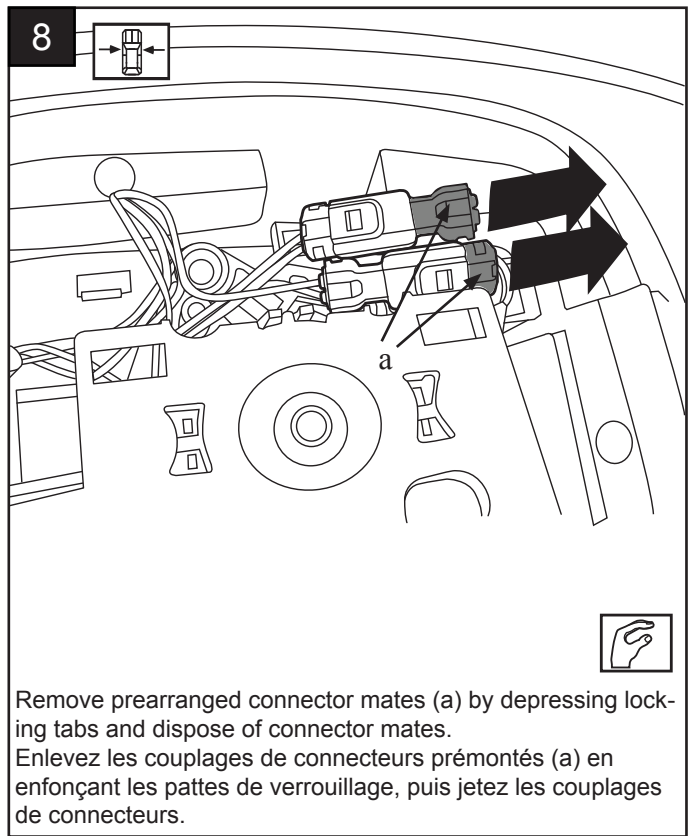
If equipped, remove heater wires from mirror housing hook (a).



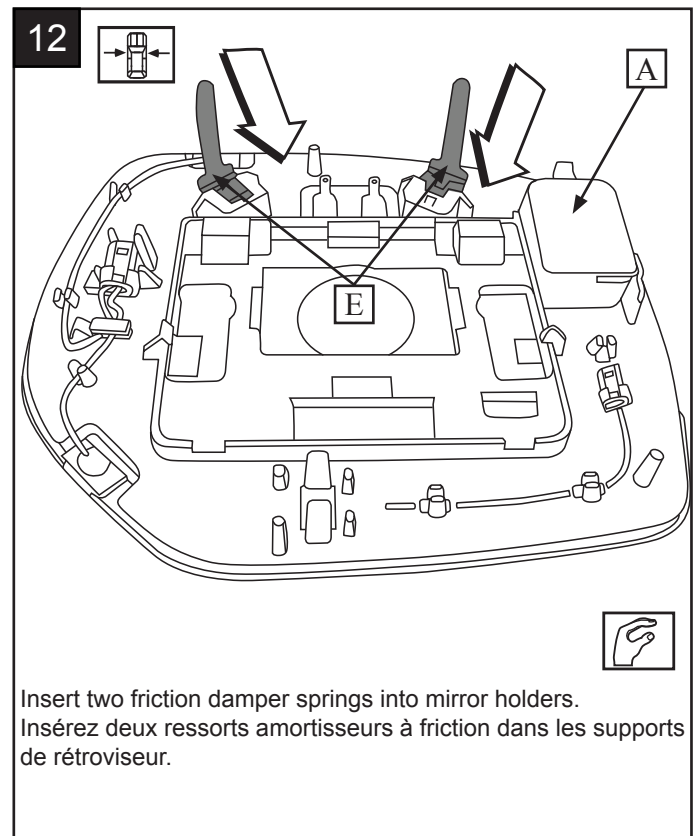
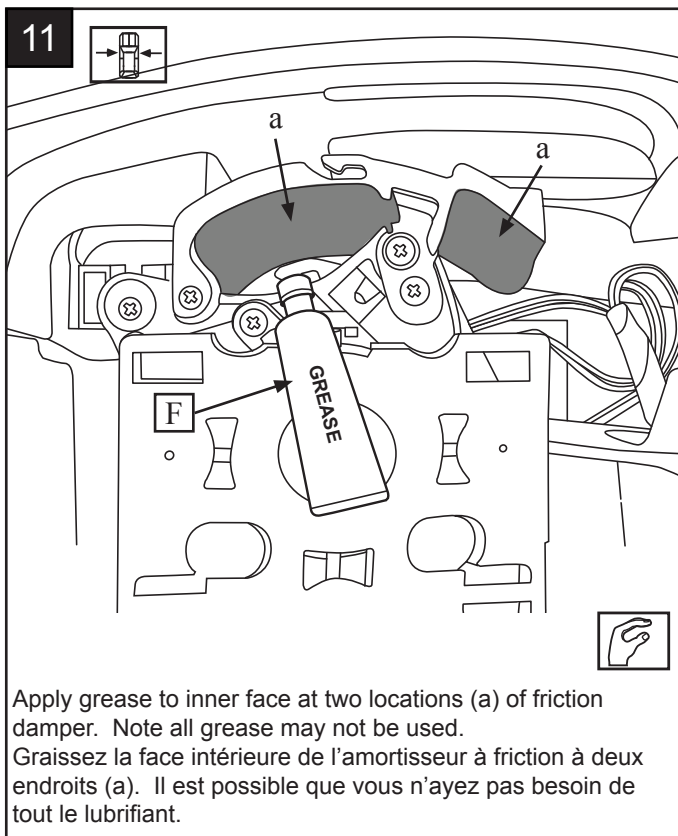
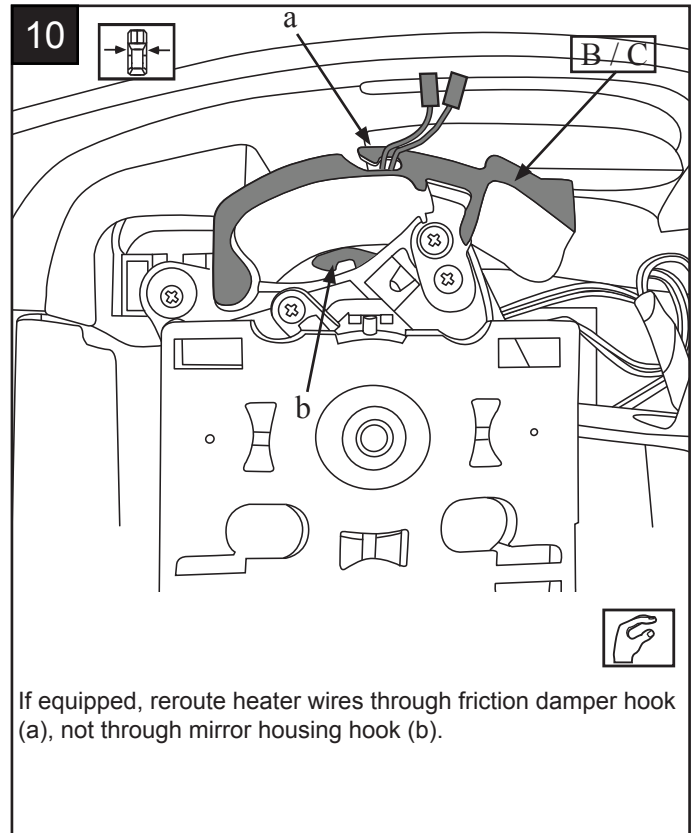
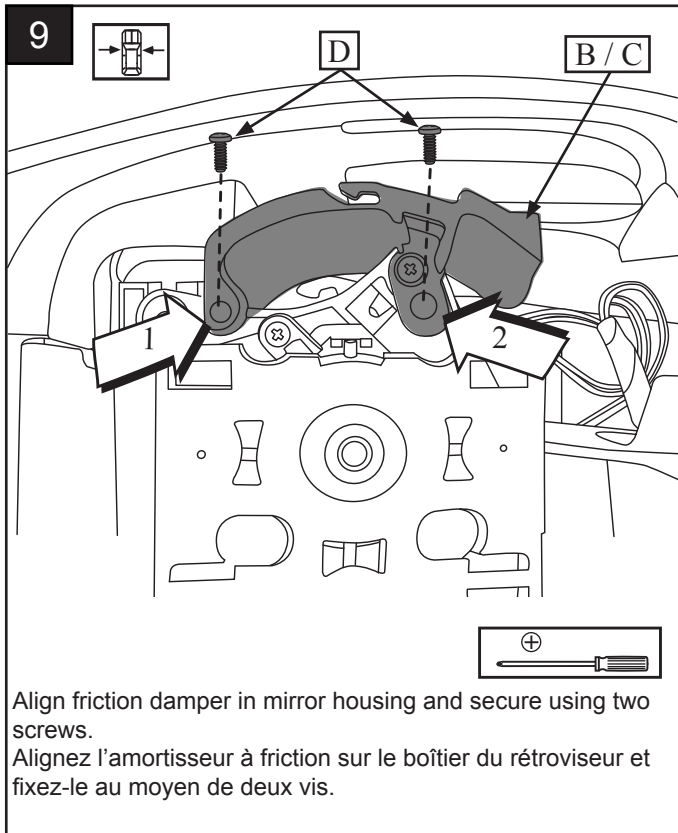
Locate prearranged vehicle connector's (a) and remove from its location.
Repérez le connecteur prémonté du véhicule (a) et enlevez-le.

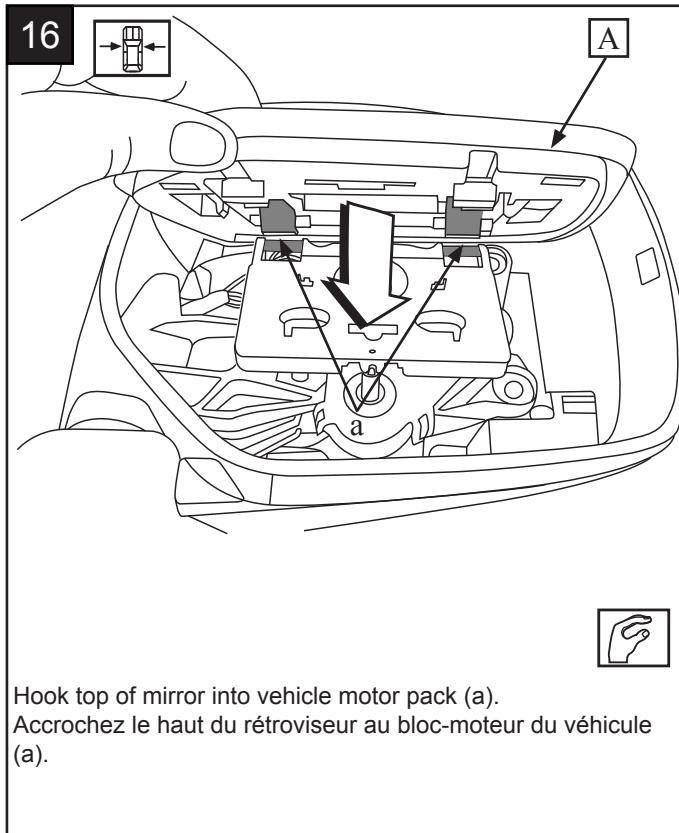
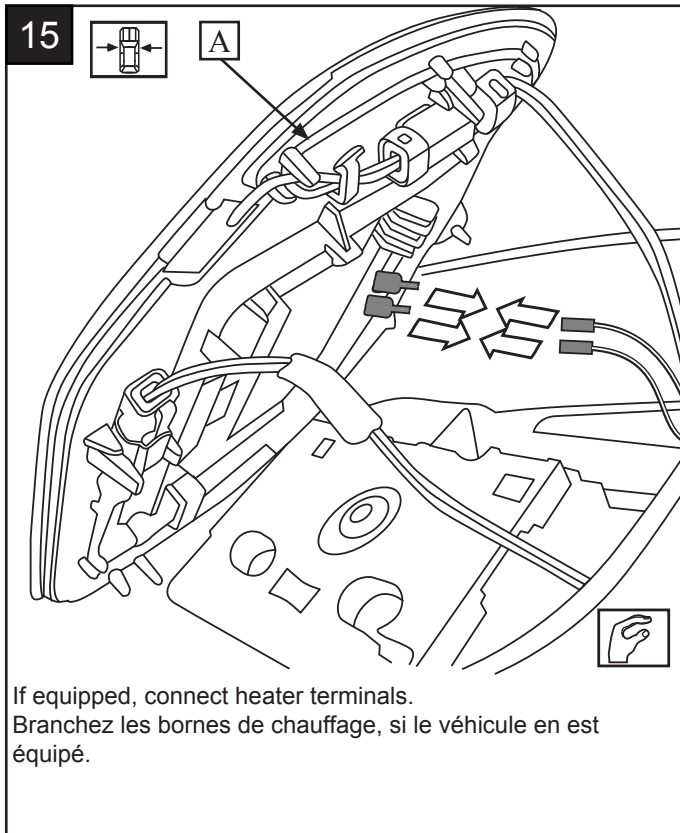
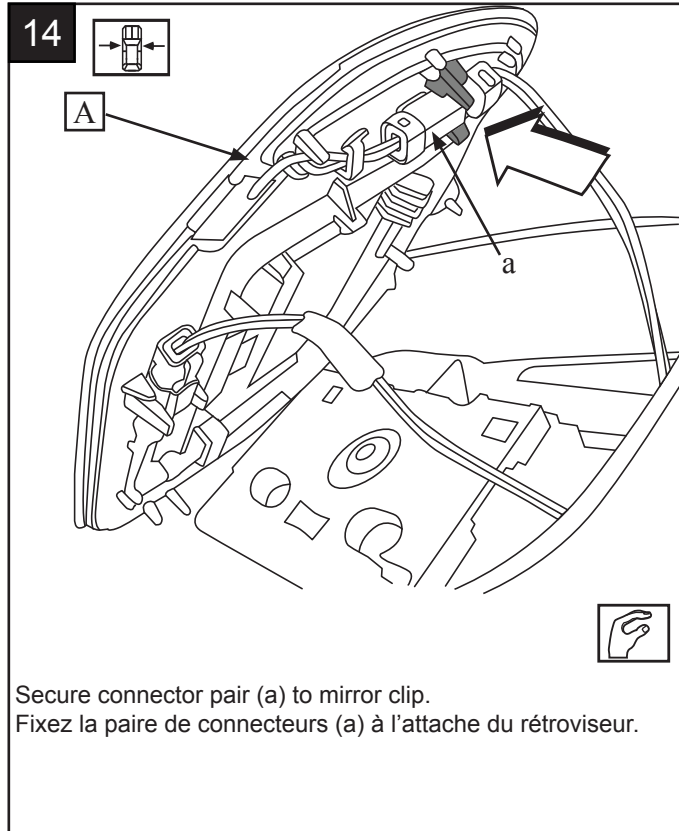
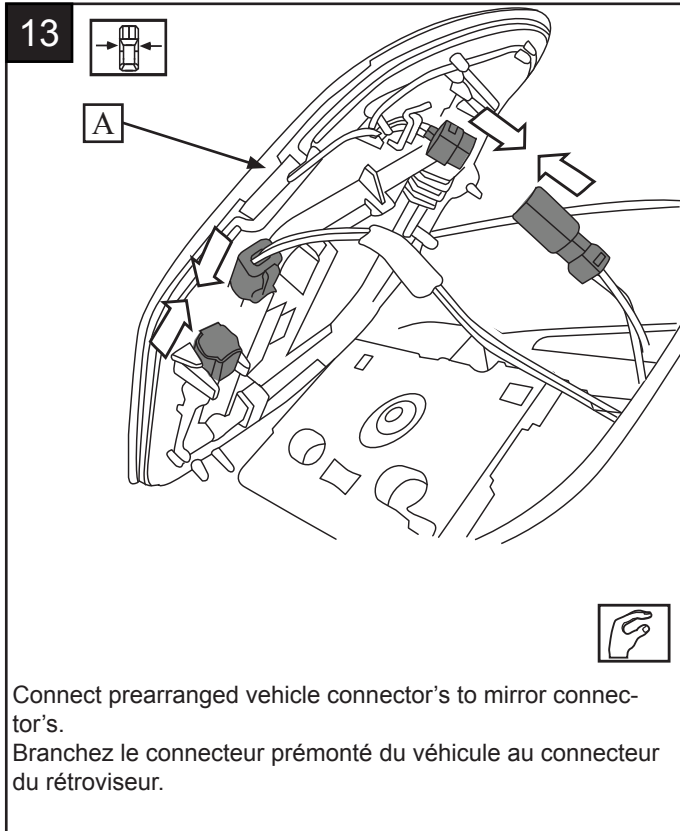


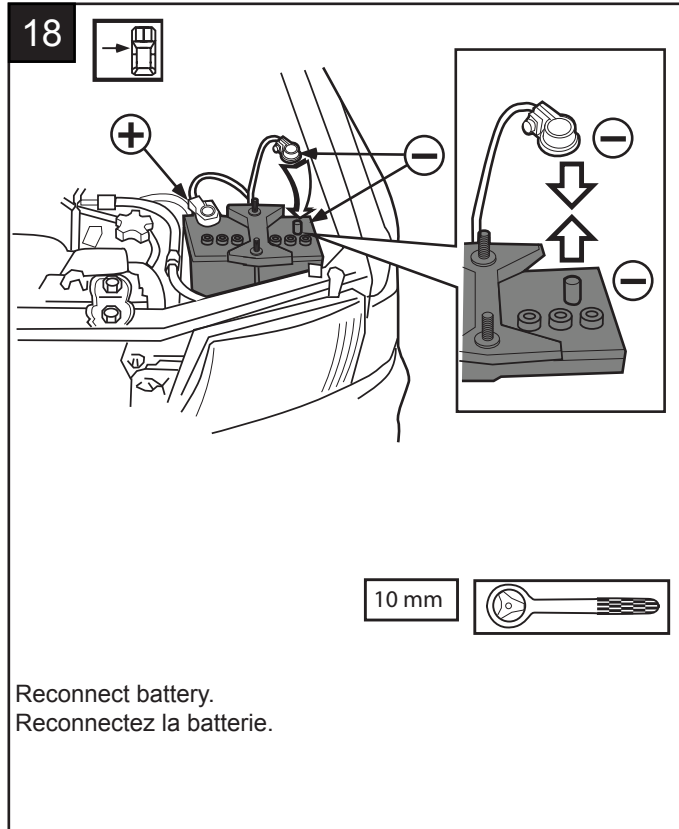
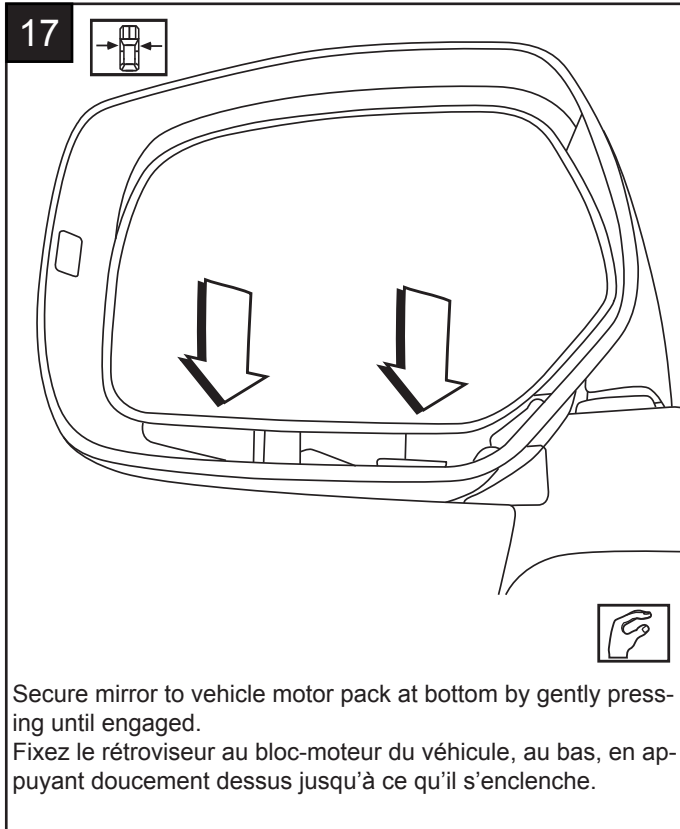
Remove foam from prearranged connectors.
Enlevez la mousse qui couvre les connecteurs prémontés.



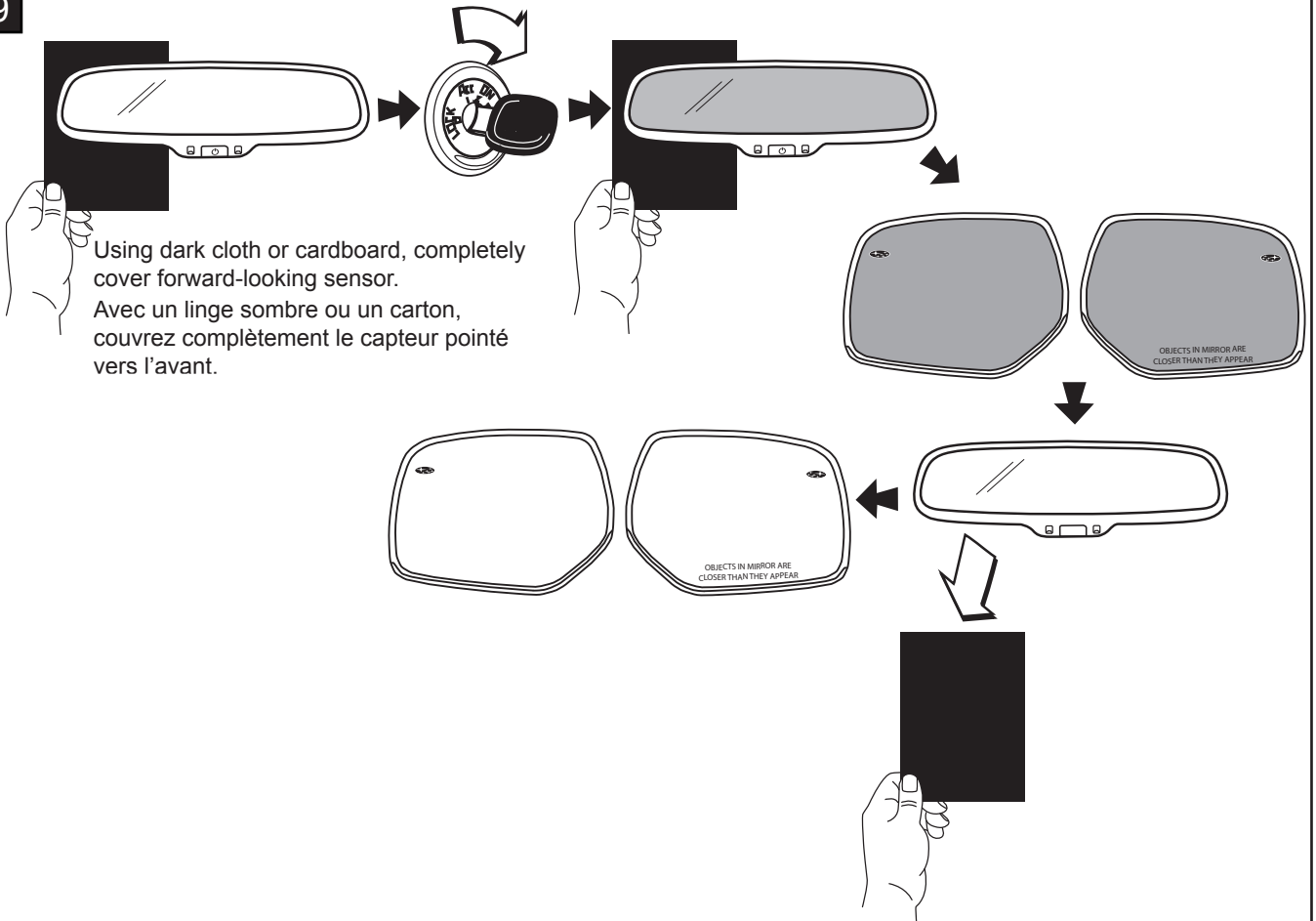
Remove prearranged connector mates (a) by depressing locking tabs and dispose of connector mates.
Enlevez les couplages de connecteurs prémontés (a) en enfonçant les pattes de verrouillage, puis jetez les couplages de connecteurs.



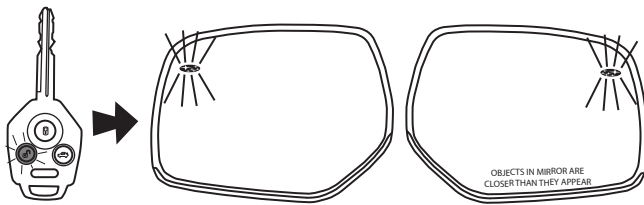




19



20



PART NUMBERS J201SSG000	ISSUE A	DATE 02/08/13	SUBARU OF AMERICA	PAGE 7/7
----------------------------	------------	------------------	-------------------	-------------